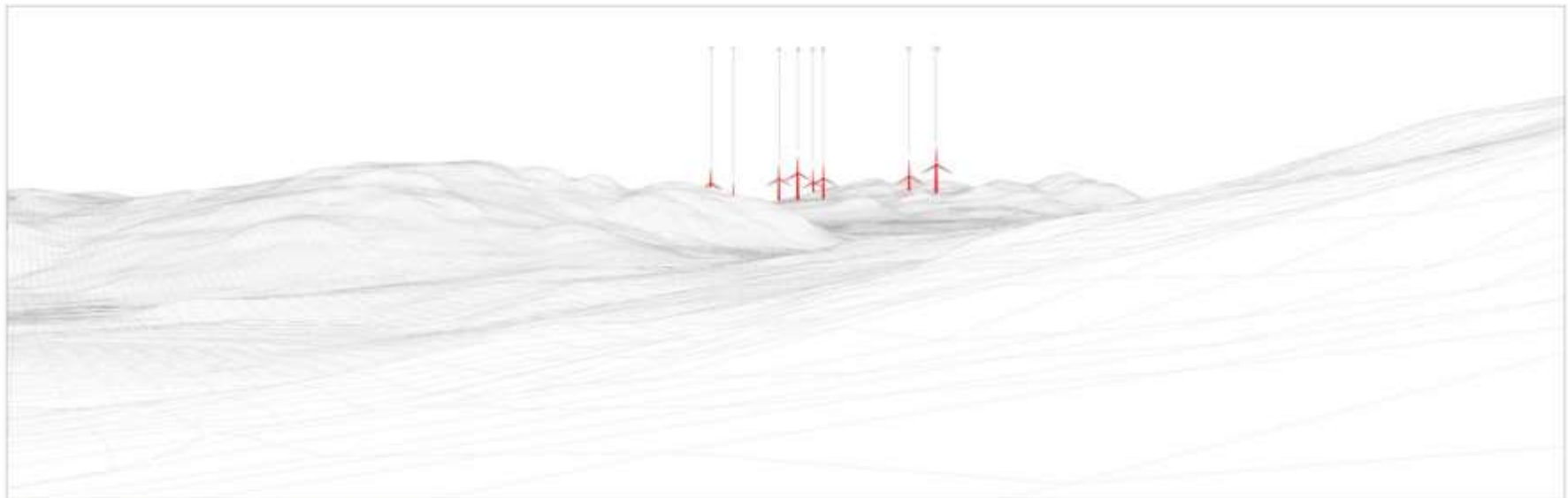


View from A886, north of Ardchuple Farm



Photomontage view from A886, north of Ardchuple Farm



Wireline view from A886, north of Ardchuple Farm

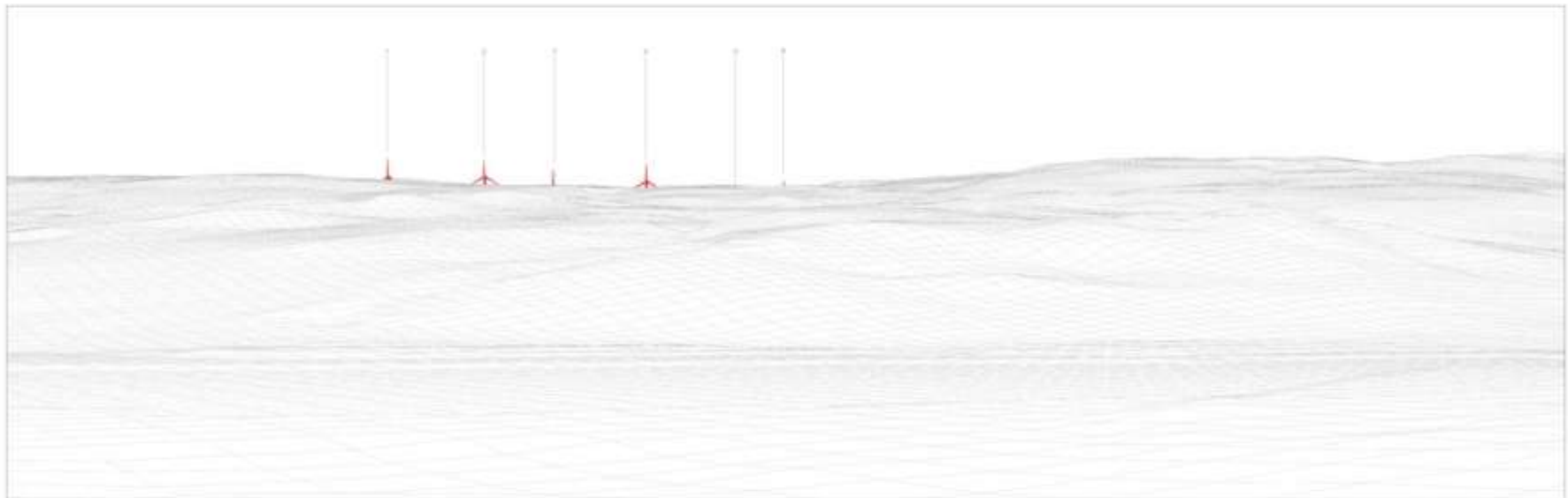


OS reference:	201501 E 679838 N
Eye level:	27.3 m AOD
Direction of view:	26.5°
Nearest turbine:	4.68 km
Horizontal field of view:	53.5° (planar projection)
Viewing distance:	View at a comfortable arm's length
Camera:	Canon EOS 5D Mark II
Lens:	50mm (Canon EF 50mm f/1.4)
Camera height:	1.5 m AGL
Date and time:	03/06/2016, 16:04

View from Glendaruel, Cowal Way north of Caravan Site



Photomontage view from Glendaruel, Cowal Way north of Caravan Site



Wireline view from Glendaruel, Cowal Way north of Caravan Site

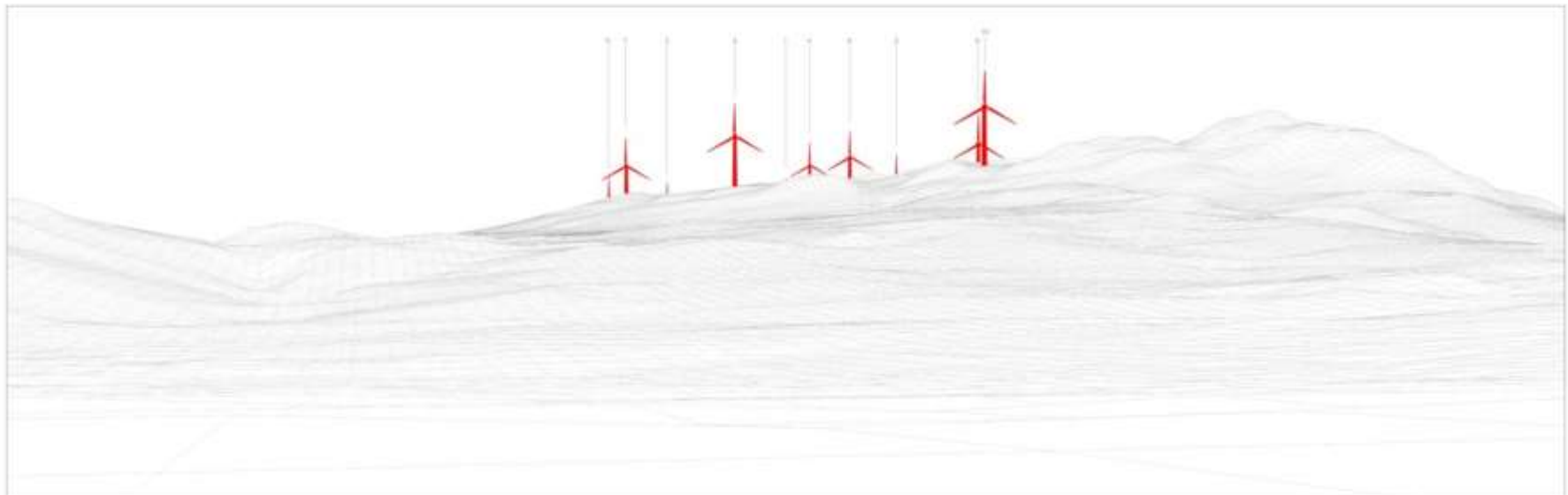


OS reference:	200017 E 687292 N
Eye level:	29.7 m AOD
Direction of view:	123.2°
Nearest turbine:	4.22 km
Horizontal field of view:	53.5° (planar projection)
Viewing distance:	View at a comfortable arm's length
Camera:	Canon EOS 5D Mark II
Lens:	50mm (Canon EF 50mm f/1.4)
Camera height:	1.5 m AGL
Date and time:	03/06/2016, 11:52

View from B836, east of Stronafian



Photomontage view from B836, east of Stronafian

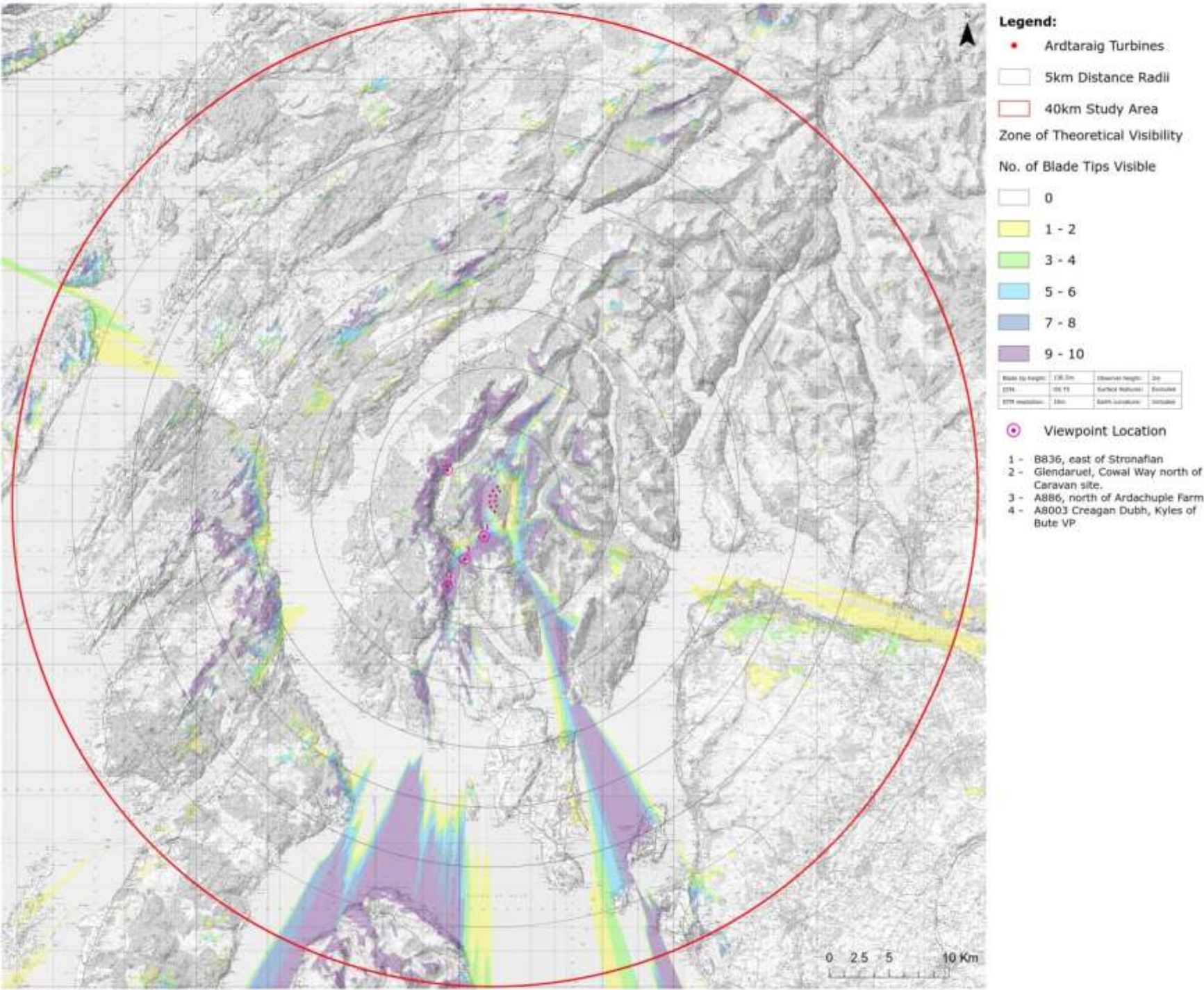


Wireline view from B836, east of Stronafian



OS reference:	203112 E 681723 N
Eye level:	90.6 m AOD
Direction of view:	15.4°
Nearest turbine:	2.3 km
Horizontal field of view:	53.5° (planar projection)
Viewing distance:	View at a comfortable arm's length
Camera:	Canon EOS 5D Mark II
Lens:	50mm (Canon EF 50mm f/1.4)
Camera height:	1.5 m AGL
Date and time:	03/06/2016, 16:18

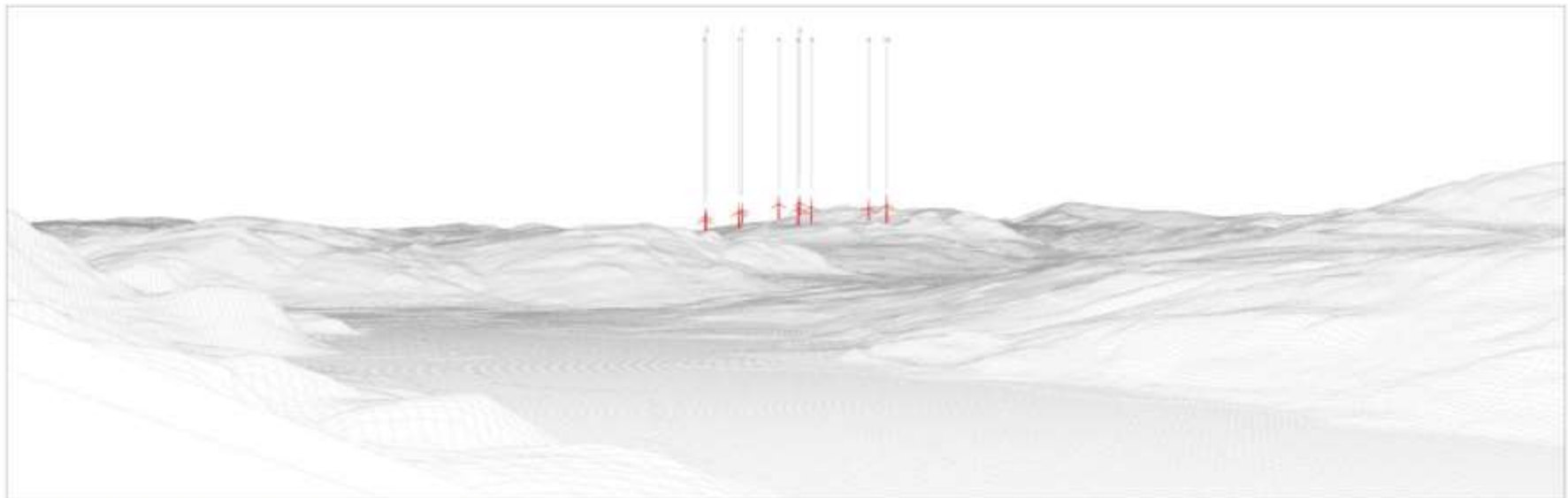
Blade Tip Zone of Theoretical Visibility



View from A8003 Creagan Dubh, Kyles of Bute View Point



Photomontage view from A8003 Creagan Dubh, Kyles of Bute View Point



Wireline view from A8003 Creagan Dubh, Kyles of Bute View Point



OS reference:	200021 E 677527 N
Eye level:	165.2 m AOD
Direction of view:	28.56°
Nearest turbine:	7.42 km
Horizontal field of view:	53.5° (planar projection)
Viewing distance:	View at a comfortable arm's length
Camera:	Canon EOS 5D Mark II
Lens:	50mm (Canon EF 50mm f/1.4)
Camera height:	1.5 m AGL
Date and time:	03/06/2016, 13:14